

**Crier**

**3**

**0**

**J**

**C**

**THE**



**VOL VII NO 4**

**JUNE 1971**

The CROWN CRIER is the monthly company newsletter of Crown International, Inc., 1718 W. Mishawaka Rd., Elkhart, Indiana.

EDITOR ..... Maretta Hershberger  
EMPLOYEE NEWS ..... Jan Smith  
SPOTLIGHT ..... Marcie Kidder  
ASSEMBLY REVIEW ..... Carol Troxel  
ON THE OTHER HAND... .... Dave McLaughlin  
PUZZLE OF THE MONTH ..... Gerald Stanley  
EXECUTIVE COMMENT ... Executive Committee  
KALORIE KORNER ..... Kate Moore  
TECH TALK ..... Dave Menges  
HAM HOBNOBS ..... Jim Abbott  
SPEED TRAP ..... Tom Szerencse  
EMPLOYEE COMMITTEE ..... Dale Kauffman  
COVER ART ..... Rich Hooton

## Editorial

A mini-article in a recent issue of Science News magazine was entitled "Television Violence: A Call to Arms." It reiterated what many of us have been closing our ears to all along, that TV violence does have an effect on the behavior of those who watch, particularly when those viewers are children.

Most of us are aware, when we stop to think about it, of the way TV has invaded our lives. Almost unconsciously we plan our schedules around our favorite programs. It is far too easy to park the kids in front of the "boob tube" to keep them quiet or out of our hair. The problem then is not being unaware, but being too apathetic.

Most of us tend to feel that there is little one person can do to stem the tide of violence on television. Individually perhaps this is so, but when the viewers present a united effort to the producers and the networks, maybe somebody will listen. If not, perhaps it is time to prove that we can all get along without the screen in our living rooms.

TV producers like to say that it is all right to show violence so long as you show the consequences. There are two



problems with this. First, studies show that children watching the programs fail to connect consequences with crime, seeing only the violence itself. Second, although adults can differentiate between who is doing the shooting and why, sometimes the kids can't, and shooting done by policemen and gangsters is one and the same.

In addition to all this, a study by Harvard associate professor Aimee Leifer indicates the following, among other things: 1) Frequent viewers of television violence are likely to over-estimate the prevalence of violence in society, in other words, to view it as a common occurrence that must be lived with, rather than something to be combatted; and 2) Frequent viewers of televised violence are more likely to remain passive bystanders to violence in real life. Just a bit scary, isn't it?

So let us answer the call to arms against TV violence. United we might accomplish something. Definitely we will accomplish nothing by sitting back and accepting the status quo. We have a  
(Cont. on page 3)

# Executive Comment

The editor apologizes abjectly for the lack of an "Executive Comment" column this month - she forgot to contact one of the executives to write until it was too late.

-----

THE SYNERGISTIC TORNADO CONTEST BEGINS AGAIN AT 1:00 PM THE DAY THIS ISSUE OF THE CRIER APPEARS ON THE EMPLOYEE AREA TABLES.

-----

## EMPLOYEE COMMITTEE

The Employee Committee met on 10 May with Bob Salak of ARA food service and discussed the vending program. Things appear to be going fairly smoothly now since most of the "bugs" have been worked out of the machines. We have received our first commission payment of a little over \$74.00 for the first month's operation. Your continued support is appreciated. There will be a full report on the pop concession soon.

R E M E M B E R

the

ROLLER SKATING PARTY

Thursday, June 2

7:00 PM

Holiday Roller Rink

Mishawaka Road

Admission: \$1.00

Skate Rental: \$.50

BRING YOUR FRIENDS

-----

Editorial (cont.)

right to have some voice in what we and our children will see, if in no other way than by turning off the set in the living room.

M.H.

# SPOTLIGHT



Shirley Sousley

June's SPOTLIGHT shines on Shirley Sousley, who works in our credit department. Shirley's job is to "collect" unpaid accounts, and the largest percentage of this is done by telephone.

She talks to people all over the country every day. Needless to say, this can be very interesting and at times very amusing. She particularly enjoyed talking with a southern gentleman who assured us he would pay his bills because he didn't want to go to jail. However, if he did end up in jail he hoped they would let him have color TV and let his wife visit him so she could bring him some decent food!

Shirley is well trained in her telephone manners, having had 13 years experience with the telephone company before coming to Crown four years ago.

Records must be kept on people's paying habits and credit status. She is called upon many times to give a credit rating on prospective customers for other companies.

Shirley has three daughters and one son. Her youngest daughter, Ruth, is salutatorian in the 1977 graduating class at Elkhart Baptist Christian School.

She has five grandchildren whom she enjoys very much, and she teaches a Sunday School class of sixth grade girls, which she also enjoys.

Somehow she finds time for sewing, and her cat, Tosha, keeps her amused.

Shirley's goal here at Crown is to do the best she can. You're doing fine, Shirley. We appreciate your pleasant voice.

# FLOODLIGHT

## MAINTENANCE DEPARTMENT

What does this department do? Who are the workers?

The Maintenance Department is headed by Millard Eger. Working under him are Steve Myers, Steve Sigsbee, Terry Baldwin, and Dwight Fields.

Steve Myers works in electrical maintenance. Tom Szerencse is the consultant when Millard and Steve run into pro-



Millard Eger

blems they need help with. At this time Steve is working on the emergency lighting system. He is also rewiring some lighting fixtures and department power switches to help cut down on Crown's electric bills. This will also help to conserve energy.

Steve Sigsbee works at keeping the grass mowed and the rock beds clean. He also levels the parking lots, straightens the scrap area, and waters the shrubs. This is called grounds maintenance.

Dwight Fields and Terry Baldwin are on the Building Maintenance crew. They vacuum offices and assembly area, sweep plant 1 and plant 2. They clean the air conditioner filters and install light bulbs. They daily pick up office and factory trash and carry it to the east dock for the trash collectors to pick up.

In addition, Terry works in preventive maintenance, checking oil and water in the trucks as well tires and fan belts. He watches the oil in the air compressor and tests the batteries in the emergency power plant. Weekly the voltage and water level for the battery for the



Steve Sigsbee & Steve Myers

security and phone systems are checked. Pressure in the fire extinguishers needs to be watched, and the fire alarms need to be sure to be working properly.

Dwight and Terry, along with Don Florea, are the security crew. Millard works with Verne Searer, who heads the security operation.

Millard Eger's job is to keep all of these divisions of the maintenance department running smoothly. He also has projects Mr. Moore gives to him and Hal Brooks to work on.

Mary Ihnken does the typing for the maintenance crew. The maintenance department also sometimes temporarily receives workers whose work is slow at a particular time to help with ground maintenance or with special projects.

--Terry Baldwin



Dwight Fields & Terry Baldwin



### Ready To Answer?

He waited . . .

Opportunity, he knew, would knock on his door and he would seize it, make the most of it.

He continued to wait.

Finally, opportunity did knock! — But he was out.

Later, it knocked again! — He was in, but the knock was so gentle, he did not hear it.

Naturally, since he missed it both times, he continued to wait, hoping that opportunity had not forgotten him.

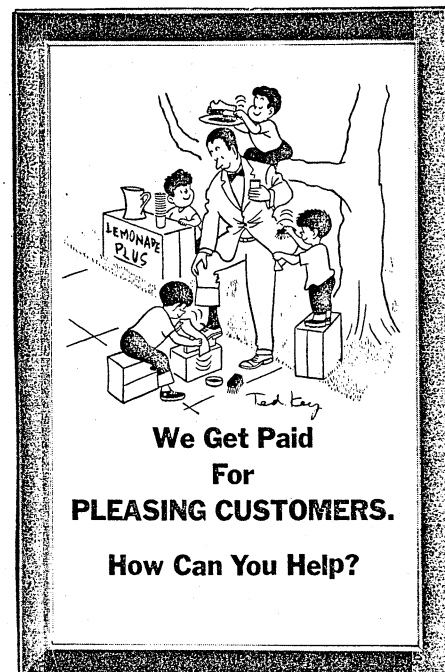
While he waited, he matured. And with that maturity came the thought that perhaps he should knock on opportunity's door. But how does one go about doing that?

He thought about it for a long time. He considered his potentials and sought the advice of professional counselors. And then he realized that only a fool waits for opportunity to knock at his door.

With that realization, he prepared himself with knowledge and with tools. Once prepared, he knocked at opportunity's door!

Opportunity answered . . .

THE TROUBLE WITH the guy who talks too fast is that he often says something he hasn't thought of yet.



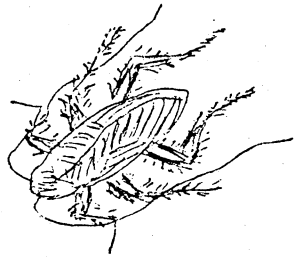
## Employee News

Treva Whitt (Stock) will always remember her birthday, which was April 26th. It was the day that she received a dozen roses from a mystery person, and one polish flashlight -- probably from some mystery Polack . . . speaking of mystery, last week our very own Margaret Eaton, Switchboard, called WXAX and gave what she thought was the winning title to a song. The only problem was -- it wasn't Mystery Songtime . . . Carla Baker (Credit) is expecting an addition to her family around Christmas time . . . Lois Roberts (Stock) recently received a pair of bikini panties -- I don't know what the occasion was, but I can guess. . Joe Veal (Shipping) will be travelling with Sports Evangelism down to Mexico again this summer. He'll appreciate your prayers, etc. . . . We're glad to have Garry Frick back in Service . . . Murray Young (Purchasing) will be assuming Dale Martin's duties in the Sales Department. . . Rich Hooten (Tech Service) and wife accompanied four other sponsors on a trip to King's Island near Cincinnati. They left at 3:00 p.m. on the 20th of May, stayed overnight, and spent the 21st at the amusement park. Needless to say, they lived to tell about it. Wanna know why? They sponsored 16 high school kids from their church, Community Gospel, Bremen. . . Thanks to everyone who handed me news this month. . .

### TRIVIAL TRUTHS

1. Chisholm's Law — Any time things seem to be going better, you have overlooked something.
2. Finagle's Law — Once a good thing is fouled up anything done to improve it makes it worse.
3. McGurk's Law — Any improbable event that would create maximum confusion if it did occur, will occur.
4. Murphy's Law — If anything can go wrong it will go wrong.
5. Parkinson's Law — Work expands to fill the time available; expenditure rises to meet income.
6. Weller's Law — Nothing is impossible for the man who doesn't have to do it himself.

archy



hey girl  
hows that for an interduckshun  
lots less formal than  
dere editor i think  
yesterday i pade a visit to  
the stockroom  
what an array of junk is in that  
plas do yu meen to tell me crown  
producks are made by putting all  
thos littul peeces together  
well ill be jiggerred  
i scard won girl i think i herd  
sosome call her jenny sheeber  
but shreeker wood be mor like what  
i herd when i winkd at her  
from a package of labuls she  
was cownting  
i liked her tho and perhaps i  
will go back sometime and get  
akwainted properly

archy

Dear Archie,

We factory cockroaches were eating  
our way through a stack of paper, hoping  
to get an education when we found  
your letter in one. You sound real  
intelligent.

We were planning to save your letter  
but, we decided to eat it for a special  
treat instead.

Annie

Your fan club  
president

## Crier Echoes

From the April 1972 issue of the CRIER  
comes this recipe for the Camp-site Cook-  
out:

### ELEPHANT STEW

1 Elephant  
2 Rabbits (optional)  
Salt  
Pepper

Cut elephant into bite size pieces.  
This will take about two months. Add gra-  
vy to cover. Cook over kerosene fire for  
about four weeks at 405°. This will serve  
3800 people. If more are expected, two  
rabbits may be added, but do this only if  
necessary, because most people do not  
like to find hare in their stew.

## Assembly Review

We've had a rather full month of assem-  
bly specials. Bob Price and Bob Burns  
introduced us to the "Big Brothers and  
Big Sisters" program of Elkhart County.

The Logan Family presented slides  
and commentary on ELWA, "The Fragrance  
of Life" broadcasts, specializing in  
counseling, hospitals, education, and  
services.

Betty Robinson gave us some information  
on Cystic Fibrosis.

Bob Curtis From Lincoln Insurance  
talked to us about the IRA fund.

We also had special music from Brian  
Ake and Joe Veal. Ruth Anne Hershberger  
and Mary Gangwer sang "This Lord is Mine"  
which was written by some friends of  
Juanita Parrott.

## Sports

Despite injuries and personnel turn-  
overs from last year, the Crown softball  
team started its season with a rousing  
24-4 thrashing of the Jaycees.

The second game was not as successful,  
and Crown lost a 14-7 decision to the  
more experienced team from NIBCO.

## On the Other Hand . . .

Last month I suggested a column on table tennis playing styles as a followup to our discussion of some basics of the game. With the equipment and jargon out of the way, there remains the exercise of playing. As you might expect, this is not nearly as easy to define. There is an old adage to the effect: "You can lead a horse to the table, but you cannot make him hit the ball." Irish proverb, I believe.

The complexity of human nature demands that everyone settle into his own peculiar playing style. The more peculiar the person, the more peculiar the style, and so forth. A few examples will illustrate this. I have not changed any names in the following due to my innate sense of fair play and generally fun-loving nature.

Larry Dennison, to begin the examples, has what may be called a defensive style. That is to say, whatever comes across the table he hits back, world without end. (There is a story that he once returned the pickle from Tom Szerencse's cheeseburger which Tom had lost in a desperate attempt to hit the ball past Larry.) At least three relatively young people have begun drawing Social Security while waiting for one of Larry's rallies to end. It's not that his shots are hard to return; it's just that there are so many of them. After the 53rd shot you begin to question the meaning of it all.

Tom Szerencse plays with a nearly opposite style. His forte is the twisting, spinning shot nastily aimed at the corner of the table. Not really a power player, Tom delights in good shots, whether his own or his opponent's. His preferred time for saying "Good shot!" to an opponent is at the instant said opponent is trying to hit his next shot. Although it is only a rumor that Tom hits more than his share of shots off the top of the net, it has been positively sworn by several that he once made the net drop a full half-inch by simply glaring at it.

Bob Leininger does not have what you would call a style. He seems, rather, to have a unique imagination that continually devises new shots as he goes along. Bob hits most of his shots harder than Tom, but works the same region of spins, twists, and ridiculous angles to get his points.

If he beats you (which he has frequently done to most of us) you may as well remember it. He will. Bob usually plays his best in drawn-out see-saw battles with the next subject.

Jim Beattie is the next subject and his style can be summed up in a single word: crude. That may not be the exact word, but it will start us off. Jim is a devotee of power table tennis. He believes in hitting the ball past the opponent, or, if he gets in the way, through him. Basically a forehand player, Jim hits most of his shots with the vehemence of a man swatting hornets. And sometimes with similar accuracy. When he is playing well he has been known to emit strange, duck-like sounds, as well as beat anyone daring to lift a racquet.

Jerry Vest depends less on a polished style and more on quick reflexes and general arrogance than those mentioned above. Playing with an outwardly casual attitude, Jerry specializes in hitting quick shots to the corners. There are times when he appears to be almost asleep while playing, and it's hard to believe he can hit many good shots in that condition. Dave Stuber has suggested that he hits some of his better shots with his tongue.

Cliff Clark plays in some ways like Jerry and some ways like Bob. He uses a variety of shots, the most frustrating of which is a high-spinning lob which looks easy to hit. It is--into the net. Defensively, Cliff has enough reach to cover most of the employee area. His major weakness arises from a habit of talking to everyone within earshot and waving to his friends while playing. In an empty hall he would be a killer.

That's it. We haven't run out of good players or interesting styles, but we're out of space. Let me modestly conclude by saying that I have lost with equal ease to each of the above. I should, however, before Maretta rudely cuts off this article, tell you the secret of a winning style of play. You start by/

-----  
PATIENCE is idling your motor when you feel like stepping on the gas!  
-----

## SECURITY

Here are some tips to help us all with plant security:

1. If taking empty boxes, please fold the flaps into the box so that it can be seen that the box is empty.
2. When taking anything out of the plant that you have purchased, please have the sales receipt unfolded and in a place where it can be seen and read.
3. Free items from the employee store must have "scrap form" attached to the items. This paper should be visible to the security man.
4. Any personally owned equipment must be accompanied with a Crown Equipment Checkout form whenever it is in the plant.
5. If you must return to the plant after hours, please tell the security man why you have returned.

These tips will help you and the security people. This will not prevent you from being asked for a random security check.

--Security

## CROWN INTERNATIONAL BLOOD PROGRAM

At the present time, every employee of Crown International and their immediate family are protected under the Elkhart General Hospital blood program if they are a patient in any hospital in the United States or Canada. This protection is guaranteed whether or not the individual is a blood donor. We are able to have this benefit because over 25% of our employees signed a blood donor card.

Also, retirees of Crown and their immediate families are included in the program.

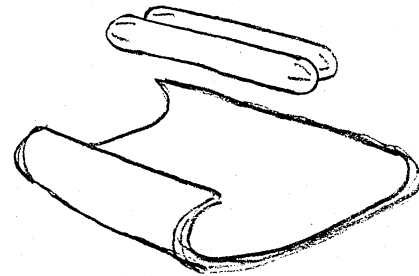
The definition of immediate family is as follows: Spouse (where applicable), children when they are claimed as dependents, and relatives who are members of the individual's household (maintaining the same address).

We want to sincerely thank each person who signed a blood donor card. Their willingness to give made the benefit available to all of us.

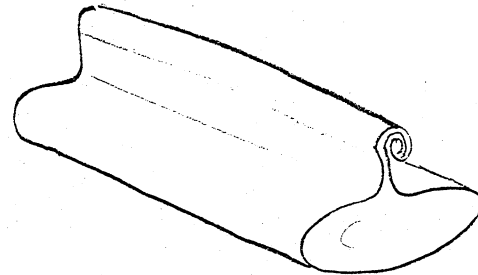
--Steve Peer

## MANIFOLD COOKING (On Your Automobile Engine)

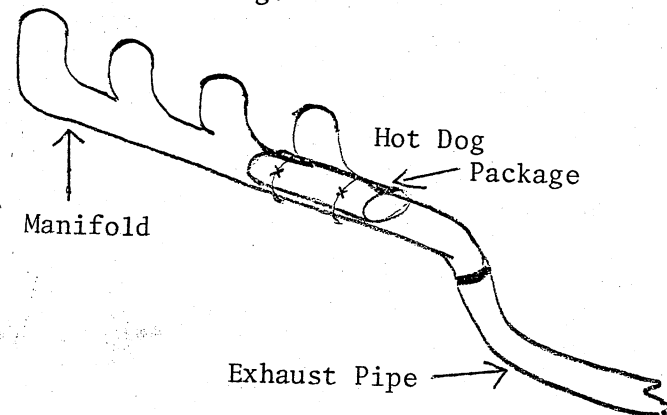
1. Place two hot dogs side by side in three layers of tin foil.



2. Wrap and roll the top of the tin foil several times to insure a seal.
  - A. No more than three to a package.
  - B. Several packs may be used for a large family.
  - C. Pack can now be frozen until ready for your trip.



3. Place package on exhaust manifold for cooking. Wire package to stay in place while driving.



4. Cooking time (for hot dogs): 30 miles or 30 minutes after engine already hot. Time and temperature may vary slightly with different engines; you may need to experiment a little.

Hot dogs, soup, stews, etc., can all be done, but moisture must be sealed in the package. You can experiment with your own engine and food ideas.

Try it; it really works!

--Submitted by Ray Stevens



## Speed Trap

Kalorie Korner

LADIES, HERE IS JUST WHAT YOU HAVE BEEN  
LOOKING FOR: A SUMMER EVENING'S MEAL ALL  
PLANNED FOR YOU!

DAVE'S SUPER TACO SALAD

- 1/2 lb. hamburger
- 2 tomatoes
- 1/2 head lettuce
- 1 small onion
- 4 oz. Western dressing
- 4 oz. sharp cheddar cheese
- 1/2 can kidney beans
- 1/2 bag taco chips (9 oz.)

Brown hamburger; pour in kidney beans,  
and simmer for 10 minutes. Drain. Chop  
up all remaining ingredients except chips  
and mix in large bowl. Add hamburger and  
beans. Mix in taco chips just before  
serving. YOU WILL PROBABLY WANT TO SERVE  
CRACKERS OR GARLIC BREAD WITH THIS.

SHIRLEY'S DELICIOUS VANILLA WAFER CAKE

- 1/2 lb. butter
- 2 cups sugar
- 6 eggs
- 1/2 cup milk
- 7 oz. coconut
- 1 cup chopped nuts
- 1 12 oz. box vanilla wafers (rolled  
medium)

Cream sugar into softened butter. Add  
eggs, one at a time, and mix well. Add  
dry ingredients with milk and mix thor-  
oughly. Pour into angel food cake pan or  
bundt pan. Bake at 325° for one hour and  
30 minutes. Cool 15 minutes and remove  
from pan. Serves 20.

KATE'S REFRESHING PUNCH

- 1 can frozen lemonade
- 1 can frozen limeade
- 1 can fozen orange juice
- 1 bottle ginger ale

Mix together except ginger ale. Add  
amount of water according to directions  
on cans. Add ginger ale when ready to  
use.

Ham Hobnobs

Well, here is another issue and not much  
to report. Was under the weather last  
month and missed the deadline. Only late  
news is scanners now legal for mobile use  
if you are a licensed amateur.

C.C. says that the repeater will be at  
300 ft. soon.

I have been more active lately on 75  
anyway. Was appointed as net control for  
the 2300 session on the Indiana traffic  
net on Fridays. Also hold OO OPS and OBS  
appointment. We also act as assistant EC  
for Kosciusko County. Keeps us hopping.  
Activity on two is real dead. Active a-  
round Warsaw, but haven't been able to  
raise a soul in the Elkhart area.

Kingsley, WB9MCU, has an HR 2B and an  
HT for sale, and as soon as I can find a  
Kenwood 7400 I'll have an HR2-A for sale  
with nine pairs of xtals. Also looking  
for a 90 foot tower to put a tri-band  
beam and a pair of 11 element beams for  
two on. So if you hear of anything,  
please let me know.

Well, that's about it. No activity, so  
nothing to report. So till next time,  
keep your coax dry. 73 & 88.

IT'S THE LAW!

In Waterloo, Nebraska, barbers are for-  
bidden to eat onions between 7 AM and 7  
PM. In Omaha it is illegal to sneeze or  
burp during church services, and in Lin-  
coln it is illegal for burglars to come  
in or go out the front door.

A New Hampshire state law holds that,  
when two motor vehicles meet at a high-  
way intersection, each shall come to a  
full stop and neither shall proceed un-  
til the other has gone. In Neligh, New  
Hampshire, it is against the law to sell  
doughnut holes.

PEOPLE CAN BE divided into three groups:  
those who make things happen, those who  
watch things happen, and those who wonder  
what happened.

JOHN W. NEWBERN

Swap Shop

WOULD LIKE TO BUY: Mature blueberry bushes; a set of pitching horseshoes and stakes; wooden picture frames; gas or electric stove. Call Murray Young, Ext. 203.

FOR SALE: French horn and B flat cornet. See Treva Whitt in the stockroom.

FOR SALE: Eumig Mark S-706 Super 8 sound projector; \$185.00; One Dalite wall or ceiling screen, 82" X 82": \$75.00. Also large selection of film classics. Call Craig Smith, Ext. 260.

FOR SALE: Four 20" doors, simulated wood finish, cut for doorknobs, new: \$6.00 each. One Sears Royal 25 home humidifier, purchased new but never installed. Sears price: \$145.00; our price: \$115.00. One replacement top, Sears 7' pool table, still in packing material: \$50.00. Call Dave McLaughlin, Ext. 225.

FOR SALE: One Rec-O-Vac record cleaner, \$10.00. Contact Dale Parrott, Ext. 264.

FOR SALE: '73 Yamaha 125, \$150.00. Needs clutch overhaul. See John Haines, Ext. 204.

WANT TO BUY: Tower for ham radio, 50-60 feet tall. Also looking for a used desk. Call Tom Szerencse, Ext. 239.

Notes from All Over

Line 2 is busy working on CX's and CXR's....The last several weeks have been quite eventful for purchasing. A revised sales projection for the balance of 1977 means a lot of work in order to see that enough, but not too much, of every part required will be on hand later this year. As well with project 640, headed for the C.E. Show, we've been busy obtaining samples and price information. With delivery of some parts now 16 weeks from the time an order is placed, purchasing has to be very alert to usage and production rates. Purchasing is looking forward to further new experiences with the soon arrival of Enos Yoder as a buyer. Murray Young is transferring to the Marketing Department June 1.

Puzzle of the Month

WHOSE HAT?

It isn't all fun being Secretary of a Club, and that is what Mike was thinking after a morning on the telephone clearing up that stupid business of the hats.

It was bad enough to have four members complaining that they had lost their homburgs; not one of them had the courtesy to apologise for taking someone else's, even though it was by mistake. But what really got the harassed Secretary was that Andy and Bill were accusing each other of downright theft, although neither had taken the other's headgear.

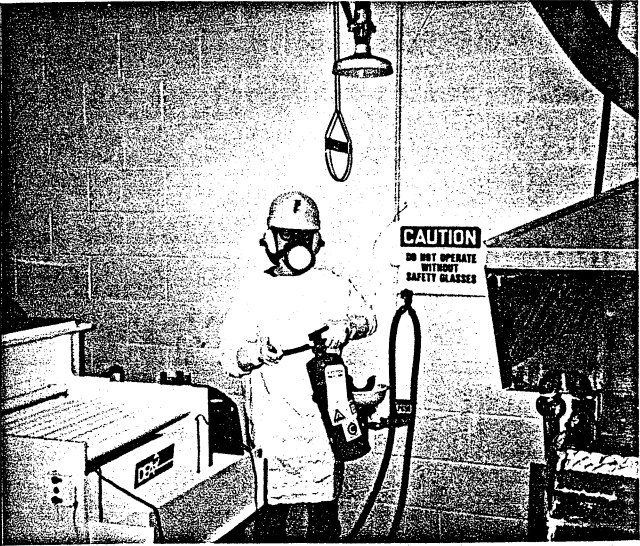
"Anyway," Mike consoled himself, "it's lucky only those four members were involved." And it was also lucky that the other two, Don and Charlie, treated the whole thing as a joke: in fact, they both congratulated Mike on tracing those almost identical homburgs.

Charlie had taken the hat of the man who had not taken Charlie's hat, but who had taken the hat of the man who had taken the hat of the man who had been the first of the four to leave the Club the previous evening. And Don had taken the hat of the man who had taken the hat of the man who had taken Andy's hat.

It was all very complicated, but perhaps you can say whose hat Charlie took.

ANSWER TO LAST MONTH'S PUZZLE:

January 1st 1900 was a Monday.  
January 1st 1901 was a Tuesday.  
January 1st in two successive years moves one day of the week, except after a leap year, when it moves two days.  
Any number divisible by the number of days in a week can be ignored.  
January 1st 1934 was  $34 + 34/4 = 42$  (Divisible by seven) which was a Monday.  
The sentence with twelve words is merely a mnemonic giving the number by which the days from the 1st January to the 1st of each month exceed a multiple of seven.



MR SAFETY, 1977

